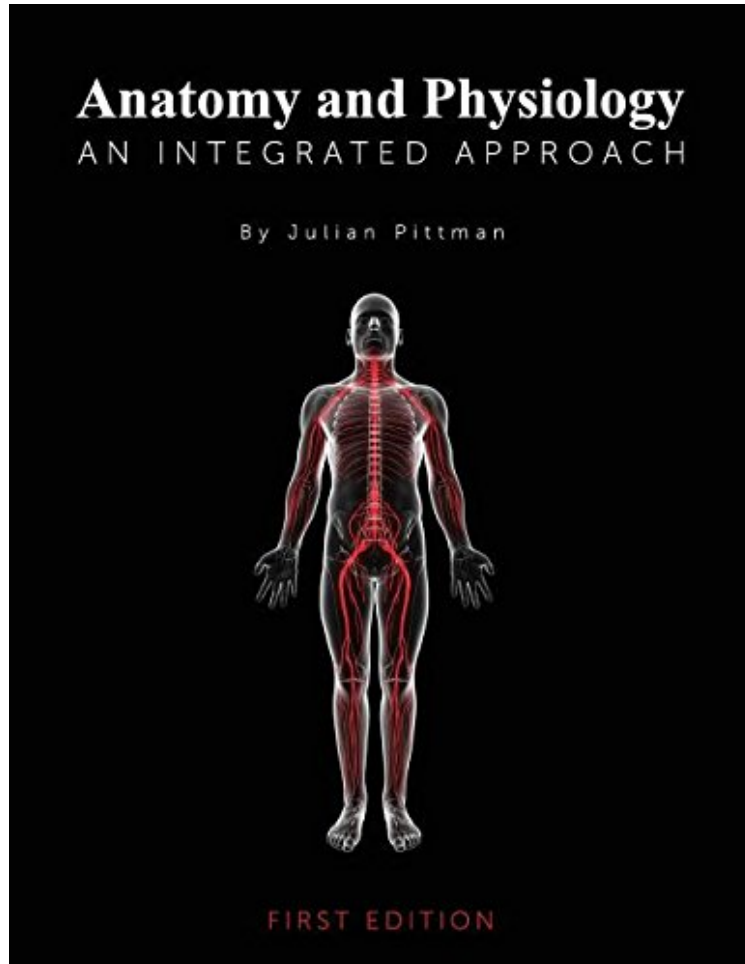


[Free read ebook] Anatomy and Physiology: An Integrated Approach

Anatomy and Physiology: An Integrated Approach

Julian Pittman

*ePub | *DOC | audiobook | ebooks | Download PDF*



#3091196 in Books 2013-12-17Original language:EnglishPDF # 1 11.02 x .98 x 8.50l, 2.47 #File Name: 1626610592488 pages | File size: 35.Mb

Julian Pittman : Anatomy and Physiology: An Integrated Approach before purchasing it in order to gage whether or not it would be worth my time, and all praised Anatomy and Physiology: An Integrated Approach:

Anatomy and Physiology: An Integrated Approach combines the study of anatomy and physiology into one well-organized and illustrated text. It teaches students about the purposes of organ systems, as well as their interconnections. It educates readers about interactions between systems and how disruption to a single system can impact overall function. The book provides detailed information on the topics covered in the traditional, two-course sequence of college-level anatomy and physiology but avoids overwhelming readers with inessential information. Rather, the material focuses on primary concepts and how to apply them. Linked learning strategies, section-specific references, and short summaries throughout each chapter emphasize and reiterate material, enhancing learning and

retention. Anatomically accurate, vibrant, realistic artwork helps readers visualize anatomic and physiological principles. Written as an integrative text, *Anatomy and Physiology* provides a consistent, balanced discussion of both anatomy and physiology within and across chapters. The book is suitable for courses on anatomy, physiology, and human biology, particularly those designed for programs in health care professions. Julian Pittman holds a doctorate from the Mississippi State University College of Veterinary Medicine. His formal training is in neuroscience and pharmacology/toxicology, and he has taught anatomy and physiology at Christopher Newport University and William and Mary. Currently Dr. Pittman is Associate Chair of the Department of Biological and Environmental Sciences at Troy University in Alabama. In addition to teaching, Dr. Pittman maintains an active research program, where his research interests are focused on understanding the behavioral, neuroanatomical, and neurochemical substrates of anxiety and depression. Dr. Pittman is a member of the Society of Biological Psychiatry.