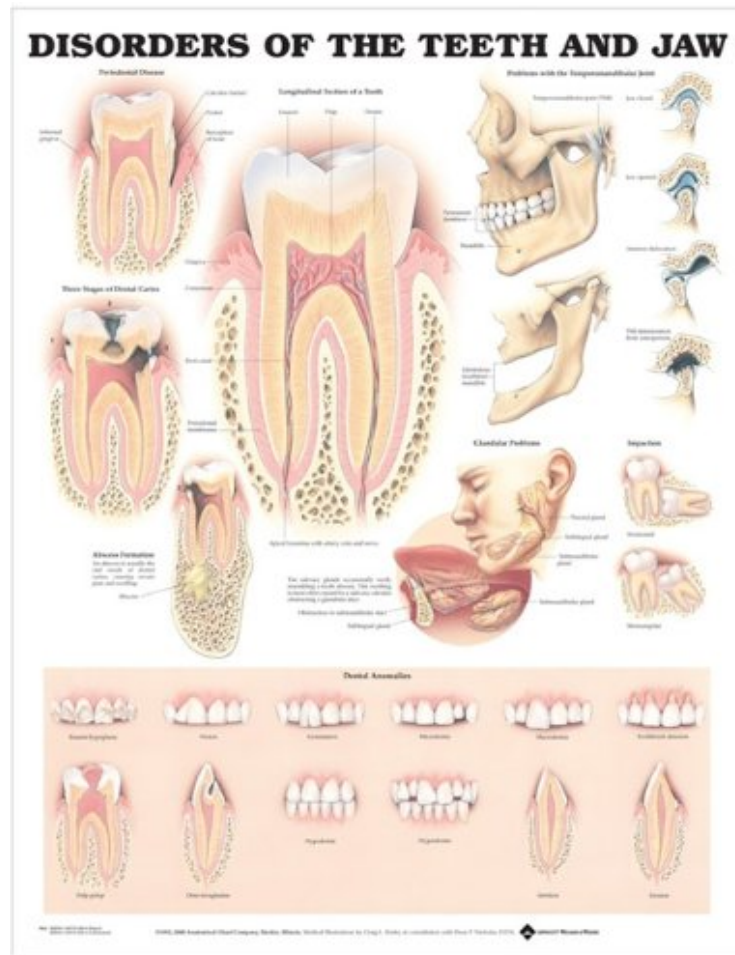


Disorders of the Teeth and Jaw Anatomical Chart

Anatomical Chart Company
audiobook / *ebooks / Download PDF / ePub / DOC



#1567878 in BooksSize: Laminated Anatomical Chart CompanyModel: ANA9866PL1-5 2000-02-05Original language:EnglishPDF # 1 27.00 x 19.50 x .25l, .25 Binding: Wall ChartShows longitudinal section of a normal tooth.Illustrates periodontal disease, three stages of dental caries, abscess formation, problems with the temporomandibular joint, glandular problems and impaction.Also shows 12 dental anomalies: enamel hypoplasia, fusion, germination, microdontia, macrodontia, toothbrush abrasion, hypodontia, hyperdontia, pulp polyp, dens invaginatus, attrition, erosion.Size is 20 inches by 26 inches - Flexible plastic 1.5 mil lamination - Anatomical Chart. | File size: 49.Mb

Anatomical Chart Company : Disorders of the Teeth and Jaw Anatomical Chart before purchasing it in order to gage whether or not it would be worth my time, and all praised Disorders of the Teeth and Jaw Anatomical Chart:

1 of 1 people found the following review helpful. ... was a gift for my Endodontist and she absolutely loved it! Very detailed and extremely easy to readBy amc507This was a gift for my Endodontist and she absolutely loved it! Very detailed and extremely easy to read.0 of 0 people found the following review helpful. Four StarsBy devilguyGood

display for dental issues. 1 of 1 people found the following review helpful. teeth chart By jma little expensive for what it is. interesting if you are in to teeth. shipped as expected on time arrival

Disorders of the Teeth and Jaw chart shows with detailed labeled illustrations normal anatomy of the tooth and various tooth and jaw disorders. The central image is a longitudinal section of a normal tooth The following tooth disorders are illustrated and labeled periodontal disease three stages of dental caries abscess formation Normal anatomy of the mandible and temporomandibular joint shown with details of jaw opened and closed , The following jaw disorders are illustrated and labeled: anterior dislocation of the TMJ TMJ deterioration from osteoporosis impaction - horizontal and mesioangular glandular problems Also shows 12 dental anomalies: enamel hypoplasia, fusion, germination, microdontia, macrodontia, toothbrush abrasion, hypodontia, hyperdontia, pulp polyp, dens invaginatus, attrition, and erosion. Made in the USA. Available in the following versions : 20" x 26" heavy paper laminated with grommets at top corners ISBN 9781587792496 20" x 26" heavy paper ISBN 9781587792502